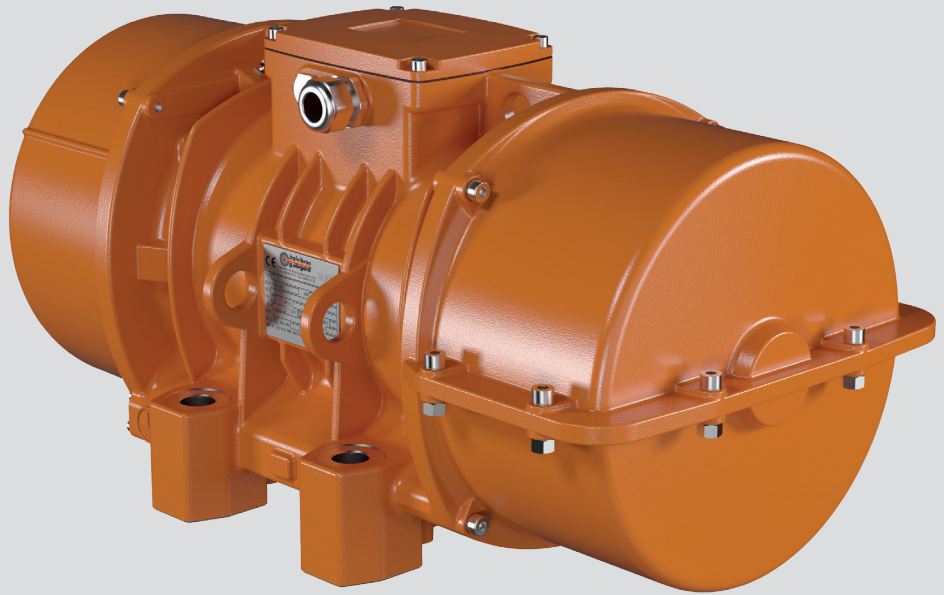


■ MVSII-TS



Technical features

Power supply

Three-phase voltage from 48V to 690V, 50Hz or 60Hz; suitable for use with an inverter from 20Hz to the base frequency, with constant torque load profile.

Polarity

4, 6 and 8 poles.

Conformity with Standards and Regulations

Low Voltage Directive 2006/95/EC;
EN/IEC 60034-1;
UL 1004-1, CSA C22.2 No.100, NEMA MG-1.

Functioning

Continual service (S1) at maximum declared centrifugal force and electric power. Intermittent services are also possible depending on the type of vibrator and the operating conditions. For detailed information contact our technical assistance office.

Centrifugal force

Range extended up to 30500 kgf. (300kN), with centrifugal force adjustable by varying eccentric weights position..

Mechanical protection

IP 66 according to IEC/EN 60529.

Protection against mechanical impacts

IK 08 according to IEC/EN 62262.

Insulation class

Class F (155°C), class H (180°C) on request.

Tropicalization

Standard on all vibrators with "drop by drop" trickle system.

Ambient temperature

From -20°C to +40°C. Versions for higher or lower temperatures are available on request.

Vibrator thermal protection

Standard PTC rated thermistor heat detectors 130°C from size 70, on request for smaller sizes. On request, thermistors with different temperatures and anti-condensation heaters.

Fixing of the vibrator

In all positions and therefore without restriction.

Lubrication

All vibrators are correctly lubricated in the factory and do not require further lubrication at start-up.

Terminal box

Large fixed electrical connections. Special shaped terminals allow to fix the power supply cable, protecting it from loosening.

Electric motor

Three-phase asynchronous type. Designed for maximum starting torques and torque curves specific to vibrating machines. Insulated windings using the "drop by drop" trickle system with class H resin. The rotor is die cast aluminium.

Casing

In high-tensile aluminium alloy up to size 60, in spheroidal cast iron for larger sizes.

Bearing flange

Constructed in cast iron (spheroidal or grey). The geometry of the flange transmits the load to the casing uniformly.

Bearings

Custom made with particular geometry, especially designed for Italtvibras, suitable to support both high radial and axial loads.

Motor shaft

In treated steel alloy (Isothermic hardening) resistant to stress.

The MVSI-TS series, obtained directly from the MVSI series, is characterized by the split weight covers. The weight cover is divided into two halves that can be removed in a radial direction, instead of axial direction as it happens for standard weight cover. According to requirements it is possible to mount one or two split weight covers.

The MVSI-TS series is indispensable in those applications where the position of the vibrator in the vibrating machine makes it difficult to axially remove the weight cover, while it has space to carry this out in a radial direction.

MVSI-TS has range extended up to 30500kgf (300kN).

Eccentric weights

Allow continual adjustment of the centrifugal force. This adjustment is realized by a graduated scale, which expresses the centrifugal force as a percentage of the maximum centrifugal force.

A patented system, called ARS, prevents adjustment errors.

Weight covers

In aluminium alloy, dismountable to allow disassembly in a radial direction. On request vibrators can be supplied with 1 or 2 split covers.

Painting / Surface coating

Electrostatic surface treatment based on epoxy polyester powder polymerized in oven at 200°C. Tested in salt spray for 500 hours. On request on MVSI-TS series other surface coatings may be available, see page 14.

Other mounting bolt patterns are available. For further details please contact sales offices at Italtibras.

The technical data and models listed in this catalogue are not binding. Italtibras reserves the right to modify them without prior notice.

Certifications



Compliance with the applicable European Union directives.



Standard CAN/CSA – C22.2, N°.100-95,
Certificate n° LR 100948
Class 4211 01 – Motors e generators
UL 1004-1 – Rotating Electrical Machines –
General Requirements



Version MVSI-TS-C available on request
Class I Div.2, Groups ABCD
Standard CAN/CSA – C22.2



Certification for Eurasian Customs Union
N° TC N RU Д-IT.АЛ33.В.02527

MVSI-TS



4 poles - 1.500/1.800 rpm

Three-phase

DESCRIPTION				MECHANICAL SPECIFICATIONS								ELECTRICAL SPECIFICATIONS					
Code	Type	SIZE	CSA*	Static moment* kgmm		Centrifugal force kg kN				Weight kg		Max input power W		Max. current A		Ia/In	
				50Hz	60Hz	50Hz	60Hz	50Hz	60Hz	50Hz	60Hz	50Hz	60Hz	400V 50Hz	460V 60Hz	50Hz	60Hz
601217	MVSI 15/1410-S02-TS	40	•	561	400	1413	1449	13,9	14,2	42,2	38,5	900	1050	1,45	1,50	4,10	4,20
601219	MVSI 15/1710-S02-TS	50	•	715	485	1798	1757	17,6	17,2	48,8	43,5	1100	1200	2,00	1,90	4,29	4,89
601267	MVSI 15/2000-S02-TS	50	•	817	561	2054	2033	20,1	19,9	51,5	45,5	1350	1450	2,50	2,30	4,30	4,90
601220	MVSI 15/2410-S08-TS	60	•	962	674	2420	2444	23,7	24,0	71,0	64,5	1600	1700	3,20	3,00	6,09	7,23
601268	MVSI 15/3000-S08-TS	60	•	1235	858	3106	3107	30,5	31	81,0	72,0	1900	2000	3,80	3,50	6,50	7,50
601221	MVSI 15/3810-S02-TS	70	•	1526	1034	3840	3744	37,7	36,7	120	111	2200	2500	3,90	3,90	7,11	6,92
601269	MVSI 15/4300-S02-TS	70	•	1720	1173	4326	4250	42,4	41,7	124	118	2500	2800	4,80	4,65	5,90	7,10
601211	MVSI 15/5010-S02-TS	80	•	1990	1364	5007	4941	49,1	48,5	162	154	3600	3400	6,00	5,00	7,02	8,00
601447	MVSI 15/6000-S02-TS	80	•	2248	1677	5654	6075	55,5	59,6	164,5	156	3600	3400	6,00	5,00	7,02	8,00
601204	MVSI 15/9500-S02-TS	97	□	3346	2462	8416	8916	82,6	87,5	318	304	7500	8500	12,2	12,0	6,56	6,67

* Working moment = 2 x static moment. □ CSA certification on request, with feeding line included.

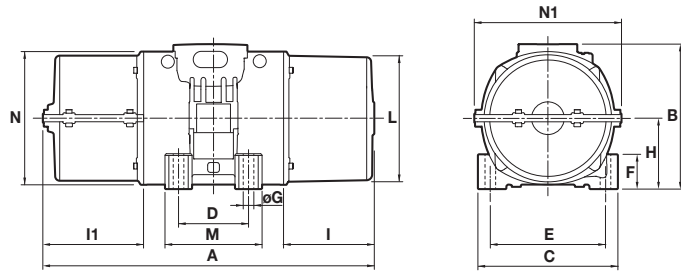


Fig. P

DIMENSIONAL SPECIFICATIONS (mm)

Type	Fig.	A n. split covers		B	C	D	E	Holes		F	H	I	L	M	N	I1	N1	Cable entry thread
		1	2					ØG	N°									
MVSI 15/1410-S02-TS	P	496	543	244	230	140	190	17	4	45	116	108	207	190	225	156	258	M25x1,5
MVSI 15/1710-S02-TS	P	522	543	244	230	140	190	17	4	45	116	134	207	190	225	156	258	M25x1,5
MVSI 15/2000-S02-TS	P	595(50Hz) 523(60Hz)	616(50Hz) 544(60Hz)	244	230	140	190	17	4	45	116	171(50Hz) 134(60Hz)	207	190	225	192(50Hz) 156(60Hz)	258	M25x1,5
MVSI 15/2410-S08-TS	P	662	707	272	275	155	225	22	4	70	130	177	238	210	253	222	287	M25x1,5
MVSI 15/3000-S08-TS	P	662	707	272	275	155	225	22	4	70	130	177	238	210	253	222	287	M25x1,5
MVSI 15/3810-S02-TS	P	624	664	321	310	155	255	23,5	4	77	157	137	277	215	295	177	326	M25x1,5
MVSI 15/4300-S02-TS	P	665(50Hz) 624(60Hz)	664	321	310	155	255	23,5	4	77	157	178(50Hz) 137(60Hz)	277	215	295	177	326	M25x1,5
MVSI 15/5010-S02-TS	P	656	682	347	340	180	280	26	4	80	165	150	303	240	320	176	356	M32x1,5
MVSI 15/6000-S02-TS	P	656	682	347	340	180	280	26	4	80	165	150	303	240	320	176	356	M32x1,5
MVSI 15/9500-S02-TS	P	878	894	437	460	125	380	39	6	35	215	230	387	320	414	246	450	M32x1,5

Ia/In = ratio between start-up current and maximum current.

Several sizes are available with different mounting bolt patterns. Please contact sales office at Italtibras.

MVSI-TS

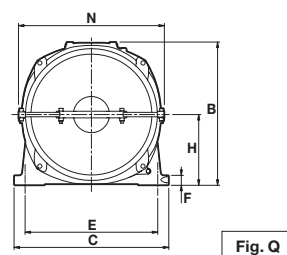
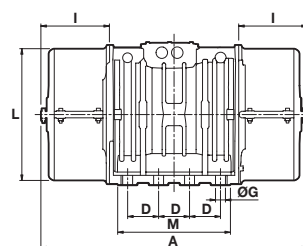
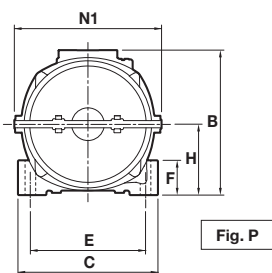
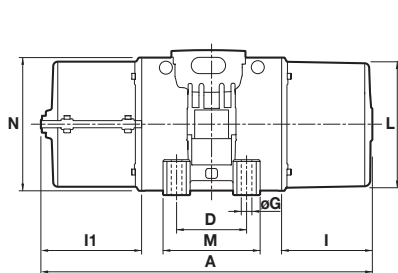


6 poles - 1.000/1.200 rpm

Three-phase

DESCRIPTION				MECHANICAL SPECIFICATIONS								ELECTRICAL SPECIFICATIONS					
Code	Type	SIZE	CSA*	Static moment* kgmm		Centrifugal force kg kN				Weight kg		Max input power W		Max. current A		Ia/In	
				50Hz	60Hz	50Hz	60Hz	50Hz	60Hz	50Hz	60Hz	50Hz	60Hz	400V 50Hz	460V 60Hz	50Hz	60Hz
602380	MVSI 10/810-S08-TS	40	•	723	561	809	905	7,94	8,88	49,0	45,0	680	760	1,40	1,35	2,53	3,68
602381	MVSI 10/1110-S08-TS	50	•	1012	715	1132	1151	11,1	11,3	64,5	57,5	750	750	1,65	1,50	3,33	4,13
602382	MVSI 10/1400-S08-TS	50	•	1274	921	1424	1483	14,0	14,5	64,0	56,5	950	1000	1,80	1,70	3,05	3,65
602406	MVSI 10/1610-S08-TS	60	•	1464	962	1638	1549	16,1	15,2	81,0	71,0	1100	1300	2,20	2,20	4,21	4,05
602407	MVSI 10/2100-S08-TS	60	•	1927	1318	2154	2102	21,1	20,6	93,0	83,0	1500	1770	3,00	2,75	3,42	4,00
602167	MVSI 10/2610-S02-TS	70	•	2326	1720	2601	2747	25,5	26,9	131	117	1960	2100	4,10	3,75	5,35	5,60
602230	MVSI 10/3000-S02-TS	70	•	2690	1940	3007	3124	29,5	30,6	146	131	2200	2400	4,50	4,30	4,35	4,81
602154	MVSI 10/3810-S02-TS	80	•	3422	2380	3826	3831	37,5	37,6	189	171	2500	3000	5,10	5,00	5,91	6,00
602204	MVSI 10/4700-S02-TS	80	•	4206	2887	4701	4648	46,1	46,0	205	184	3200	3600	6,50	6,00	5,24	5,50
602350	MVSI 10/5150-S02-TS	80	•	/	3230	/	5200	/	51,0	/	201	/	3600	/	6,00	/	5,50
602138	MVSI 10/5200-S02-TS	90	•	4658	3288	5208	5293	51,1	51,9	239	216	3800	4000	7,00	6,50	4,71	5,08
602351	MVSI 10/5700-S02-TS	90	•	5044	3478	5650	5650	55,4	54,9	241	221	3800	4000	7,00	6,50	4,71	5,08
602091	MVSI 10/6500-S02-TS	90	•	5838	4055	6527	6529	64,0	64,0	269	259	4300	5000	8,20	8,10	4,51	5,83
602352	MVSI 10/7000-S02-TS	90	•	6272	4348	7013	7000	68,8	68,7	276	264	4300	5000	8,20	8,10	4,51	5,83
602092	MVSI 10/8000-S90-TS	95	□	7197	4967	8046	7996	78,9	78,4	316	278	7000	7500	12,6	11,3	4,59	5,58
602093	MVSI 10/9000-S90-TS	95	□	7752	5385	8666	8669	85,0	85,0	327	290	7500	8200	14,0	12,9	4,13	4,88
602137	MVSI 10/10000-S02-TS	97	□	8673	5664	9695	9117	95,1	89,4	382	341	7600	8000	13,5	12,4	4,72	4,92
602227	MVSI 10/13000-S02-TS	97	□	11510	8158	12867	13130	126	129	461	383	9600	10000	17,0	16,0	4,98	5,00
602142	MVSI 10/15000-S02-TS	105	□	12662	8700	14155	14004	139	137	644	606	10600	11270	19,0	18,0	5,88	5,78
602143	MVSI 10/17500-S02-TS	105	□	15500	10439	17327	16804	170	165	705	656	13000	13700	24,5	23,0	5,71	5,96
602244	MVSI 10/19500-S02-TS	105	□	17947	11430	20062	18400	197	181	711	661	13000	13700	24,5	23,0	5,71	5,96
602144	MVSI 10/22000-S90-TS	110	□	20025	12553	22386	20208	220	198	926	896	19000	19000	33,0	25,5	4,67	5,88
602273	MVSI 10/25000-S90-TS	110	□	22364	14785	25000	23800	245	233	960	928	19000	19000	33,0	25,5	4,67	5,88
602336	MVSI 10/30000-S02-TS	120	□	27285	18760	30502	30200	299	296	1210	1160	24000	25800	40,0	38,0	4,89	5,39

* Working moment = 2 x static moment. □ CSA certification on request, with feeding line included.



DIMENSIONAL SPECIFICATIONS (mm)

Type	Fig.	A		B	C	D	E	ØG	N°	F	H	I	L	M	N	I1	N1	Cable entry thread
		n. split covers	Holes															
MVSI 10/810-S08-TS	P	522(50Hz) 496(60Hz)	543	246	230	140	190	17	4	45	116	134(50Hz) 108(60Hz)	207	190	225	156	258	M25x1,5
MVSI 10/1110-S08-TS	P	595	616	246	230	140	190	17	4	45	116	171	207	190	225	192	258	M25x1,5
MVSI 10/1400-S08-TS	P	618	662	246	230	140	190	17	4	45	116	171	207	190	225	215	258	M25x1,5
MVSI 10/1610-S08-TS	P	662(50Hz) 622(60Hz)	707	246	275	140	190	17	4	70	130	177(50Hz) 137(60Hz)	238	210	253	222	287	M25x1,5
MVSI 10/2100-S08-TS	P	685(50Hz) 662(60Hz)	707	246	275	140	190	17	4	70	130	200(50Hz) 177(60Hz)	238	210	253	222	287	M25x1,5
MVSI 10/2610-S02-TS	P	718	770	321	310	155	255	23,5	4	77	157	178	277	215	295	230	326	M25x1,5
MVSI 10/3000-S02-TS	P	741	770	321	310	155	255	23,5	4	77	157	201	277	215	295	230	326	M25x1,5
MVSI 10/3810-S02-TS	P	758	782	347	340	180	280	26	4	80	165	202	303	240	320	226	356	M32x1,5
MVSI 10/4700-S02-TS	P	822	848	347	340	180	280	26	4	80	165	233	303	240	320	259	356	M32x1,5
MVSI 10/5150-S02-TS	P	837(60Hz)	848(60Hz)	347	340	180	280	26	4	80	165	236	303	240	320	259	356	M32x1,5
MVSI 10/5200-S02-TS	P	818	892	370	390	200	320	28	4	90	180	192	330	270	350	266	382	M32x1,5
MVSI 10/5700-S02-TS	P	866	892	370	390	200	320	28	4	90	180	240	330	270	350	266	382	M32x1,5
MVSI 10/6500-S02-TS	P	866	892	370	390	200	320	28	4	90	180	240	330	270	350	266	382	M32x1,5
MVSI 10/7000-S02-TS	P	866	892	370	390	200	320	28	4	90	180	240	330	270	350	266	382	M32x1,5
MVSI 10/8000-S90-TS	P	896	922	395	392	200	320	28	4	100	192	255	355	270	375	281	410	M32x1,5
MVSI 10/9000-S90-TS	P	896	922	395	392	200	320	28	4	100	192	255	355	270	375	281	410	M32x1,5
MVSI 10/10000-S02-TS	P	878	894	437	460	125	380	39	6	35	215	230	387	320	414	246	450	M32x1,5
MVSI 10/13000-S02-TS	P	1017	1032	437	460	125	380	39	6	35	215	300	387	320	414	315	450	M32x1,5
MVSI 10/15000-S02-TS	P	1030	1100	526	570	140	480	45	8	41	268	200	495	510	516	270	566	M32x1,5
MVSI 10/17500-S02-TS	P	1070	1100	526	570	140	480	45	8	41	268	240	495	510	516	270	566	M32x1,5
MVSI 10/19500-S02-TS	P	1150(50Hz) 1070(60Hz)	1180(50Hz) 1100(60Hz)	526	570	140	480	45	8	41	268	280(50Hz) 240(60Hz)	495	510	516	310(50Hz) 270(60Hz)	566	M32x1,5
MVSI 10/22000-S90-TS	P	1175	1200	607	610	140	520	45	8	38	297	298	542	510	582	323	616	M32x1,5
MVSI 10/25000-S90-TS	P	1175	1200	607	610	140	520	45	8	38	297	298	542	510	582	323	616	M32x1,5
MVSI 10/30000-S02-TS	Q	/	1205	649	700	140	600	45	8	45	320	/	/	510	/	310	660	M32x1,5

la/ln = ratio between start-up current and maximum current.
 Several sizes are available with different mounting bolt patterns. Please contact sales office at Italtibras.



MVSI-TS

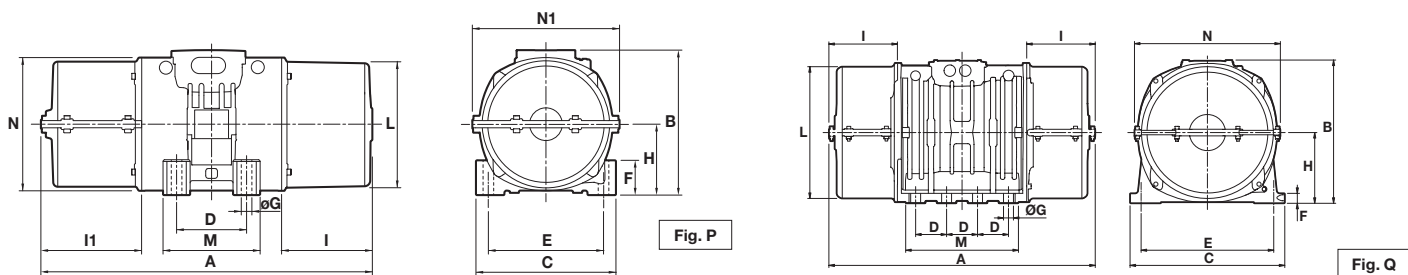


8 poles - 750/900 rpm

Three-phase

DESCRIPTION				MECHANICAL SPECIFICATIONS								ELECTRICAL SPECIFICATIONS					
Code	Type	SIZE	CSA*	Static moment* kgmm		Centrifugal force kN				Weight kg		Max input power W		Max. current A		Ia/In	
				50Hz	60Hz	50Hz	60Hz	50Hz	60Hz	50Hz	60Hz	50Hz	60Hz	400V 50Hz	460V 60Hz	50Hz	60Hz
602610	MVSI 075/910-S08-TS	50	•	1012	1012	637	917	6,30	9,00	56,8	56,8	400	500	1,40	1,30	2,38	2,85
602618	MVSI 075/1310-S08-TS	60	•	1464	1464	922	1327	9,04	13,0	81,0	81,0	950	1100	2,20	2,20	2,63	3,41
602619	MVSI 075/1750-S08-TS	60	•	1927	1927	1214	1747	11,9	17,1	93,0	93,0	1100	1300	2,60	2,26	2,78	3,04
602891	MVSI 075/2110-S02-TS	70	•	2326	2326	1463	2107	14,4	20,7	130	130	1500	1790	4,10	4,20	3,55	2,95
602884	MVSI 075/3110-S02-TS	80	•	3422	3422	2152	3099	21,1	30,4	188	188	2000	2300	5,40	5,20	3,98	4,62
602515	MVSI 075/3800-S02-TS	80	•	4206	4206	2645	3808	25,9	37,4	204	204	2500	3000	6,00	6,00	4,00	4,20
602862	MVSI 075/4200-S02-TS	90	•	4658	4658	2930	4218	28,7	41,4	238	238	2800	3350	6,50	6,50	3,84	4,00
602826	MVSI 075/5300-S02-TS	90	•	5838	5838	3672	5287	36,0	51,9	268	268	4000	4300	8,20	7,85	3,87	5,35
602827	MVSI 075/6500-S90-TS	95	□	7197	7197	4526	6517	44,4	63,9	315	315	4900	5800	9,90	9,50	3,04	3,26
602551	MVSI 075/6800-S02-TS	97	□	7340	7340	4616	6647	45,3	65,2	330	330	5600	6000	10,5	10,0	3,12	3,30
602870	MVSI 075/10000-S02-TS	97	□	12390	10973	7792	9937	76,4	97,5	438	419	6800	7450	13,2	12,0	3,33	3,92
602871	MVSI 075/14000-S02-TS	105	□	17946	15500	11285	14036	111	138	702	680	9200	9600	21,0	19,5	4,99	5,44
602872	MVSI 075/17000-S02-TS	105	□	21337	19064	13418	17263	132	169	755	711	10400	11140	22,0	20,0	5,50	5,90
602873	MVSI 075/22000-S90-TS	110	□	28633	24508	18005	22192	177	218	1015	981	12500	16200	26,5	28,0	5,63	4,71
602535	MVSI 075/26000-S90-TS	110	□	-	28633	-	25927	-	254	-	1015	-	16200	-	28,0	-	4,71
602589	MVSI 075/30000-S02-TS	120	□	47465	33440	29845	30280	293	297	1400	1280	24400	-	43,0	-	6,00	-

* Working moment = 2 x static moment. □ CSA certification on request, with feeding line included.



DIMENSIONAL SPECIFICATIONS (mm)

Type	Fig.	A		B	C	D	E	Holes		F	H	I	L	M	N	I1	N1	Cable entry thread
		n. split covers	1					2	ØG									
MVSI 075/910-S08-TS	P	595	616	246	230	140	190	17	4	45	116	171	210	190	225	192	258	M25x1,5
MVSI 075/1310-S02-TS	P	662	707	246	275	140	190	17	4	70	130	177	238	210	253	222	287	M25x1,5
MVSI 075/1750-S02-TS	P	685	707	246	275	140	190	17	4	70	130	200	238	210	253	222	287	M25x1,5
MVSI 075/2110-S02-TS	P	718	770	321	310	155	255	23,5	4	77	157	178	277	215	295	230	326	M25x1,5
MVSI 075/3110-S02-TS	P	758	782	347	340	180	280	26	4	80	165	202	303	240	320	226	356	M32x1,5
MVSI 075/3800-S02-TS	P	822	848	347	340	180	280	26	4	80	165	233	303	240	320	259	356	M32x1,5
MVSI 075/4200-S02-TS	P	818	892	370	390	200	320	28	4	90	180	192	330	270	350	266	382	M32x1,5
MVSI 075/5300-S02-TS	P	866	892	370	390	200	320	28	4	90	180	240	330	270	350	266	382	M32x1,5
MVSI 075/6500-S90-TS	P	896	922	395	392	200	320	28	4	100	192	255	355	270	375	281	410	M32x1,5
MVSI 075/6800-S02-TS	P	878	894	437	460	125	380	39	6	35	215	230	387	320	414	246	450	M32x1,5
MVSI 075/10000-S02-TS	P	1017	1032	437	460	125	380	39	6	35	215	300	387	320	414	315	450	M32x1,5
MVSI 075/14000-S02-TS	P	1070	1100	526	570	140	480	45	8	41	268	240	485	510	516	270	566	M32x1,5
MVSI 075/17000-S02-TS	P	1150	1180	526	570	140	480	45	8	41	268	280	485	510	516	310	566	M32x1,5
MVSI 075/22000-S90-TS	P	1175	1200	607	610	140	520	45	8	38	297	298	542	510	582	323	616	M32x1,5
MVSI 075/26000-S90-TS	P	1175	1200	607	610	140	520	45	8	38	297	298	542	510	582	323	616	M32x1,5
MVSI 075/30000-S02-TS	Q	/	1325	649	700	140	600	45	8	45	320	/	/	510	/	370	660	M32x1,5

la/ln = ratio between start-up current and maximum current.

Several sizes are available with different mounting bolt patterns. Please contact sales office at Italtibras.