

CVEM

ELECTROMAGNETIC VIBRATORS



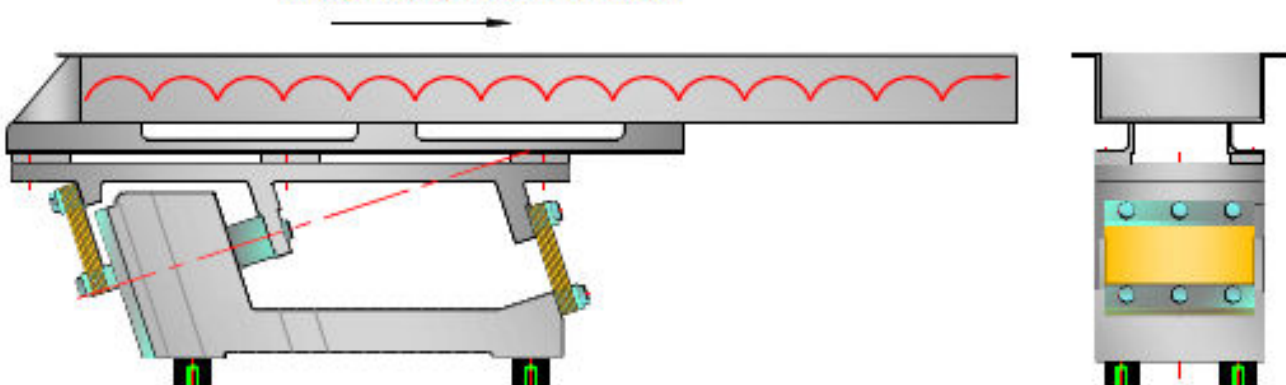


- Instant Start / Stop
- Infinite variable feedrate control
- Protection IP67
- Power supply 230V 50/60Hz
- Available with or without conveying trough
- 5 models available
- Tray lengths up to 1500mm

| PERFORMANCE DATA | | | | | |
|---|-----------------------------------|-------------------------------------|--|--------------------------|--------------------------|
| Model | CVEM 25-M | CVEM 50-M | CVEM 55-M | CVEM 60-M | CVEM 90-M |
| Max. Trough Weight (Kg) | 2 | 6 | 11 | 17 | 20 |
| Typical Trough Length x Width (mm) | 250 x 100 300 x 50 400 x 50 | 500 x 120 550 x 120 600 x 150 | 700 x 150 700 x 180 800 x 200 900 x 200 | 1000 x 250 1200 x 200 | 1300 x 250 1500 x 200 |
| Amps | 0.23 | 0.48 | 1.21 | 1.50 | 3.41 |
| Amplitude Peak to Peak (mm) | 1.5 | 2.0 | 2.0 | 2.0 | 2.0 |
| Torque for Spring Clamping (mKg) | 0.15 | 1.5 | 1.5 | 1.5 | 1.5 |
| Frequency (vpm) | 3000 | 3000 | 3000 | 3000 | 3000 |

CONTINUOUS VIBRATION AT A POSITIVE DRIVE ANGLE WILL PRODUCE A SERIES OF MICRO-HOPS INTO THE PRODUCT AND CONVEYS IT FORWARD

DIRECTION OF PRODUCT FLOW



VIBTEC AUSTRALIA

Unit 2, 64 Baile Road, Canning Vale, WA 6155, Perth Australia

Tel: +61 (0)8 6559 7470 Email: info@vibtec.com.au Web: www.vibtec.com.au

DIMENSIONS

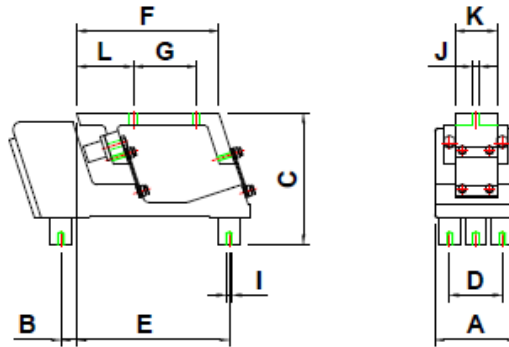


Fig. A

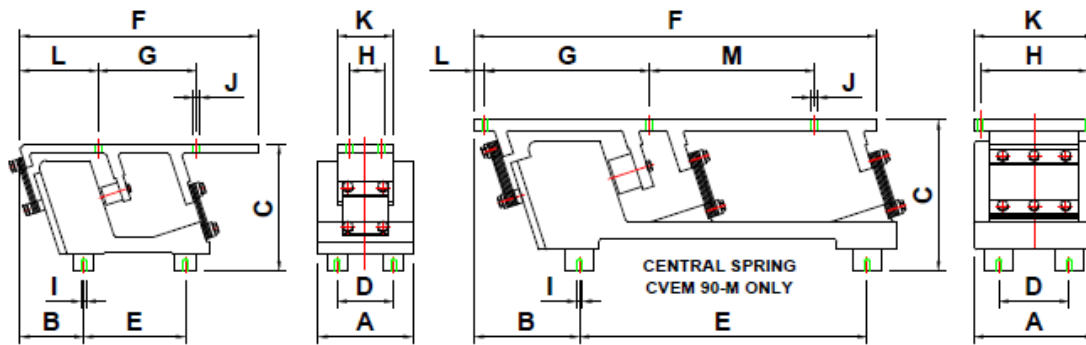


Fig. B

Fig. C

| Model | A | B | C | D | E | F | G | H | I | J | K | L | M | Fig |
|-----------|-----|-----|-----|-----|-----|-----|-----|-----|----|----|-----|----|-----|-----|
| CVEM 25-M | 78 | 15 | 124 | 50 | 145 | 135 | 60 | - | M6 | Ø7 | 40 | 54 | - | A |
| CVEM 50-M | 135 | 91 | 180 | 80 | 145 | 340 | 140 | 45 | M8 | Ø9 | 80 | 91 | - | B |
| CVEM 55-M | 143 | 140 | 187 | 100 | 175 | 405 | 160 | 80 | M8 | Ø9 | 117 | 9 | 160 | C |
| CVEM 60-M | 143 | 155 | 190 | 100 | 290 | 478 | 220 | 127 | M8 | Ø9 | 143 | 15 | 220 | C |
| CVEM 90-M | 172 | 150 | 215 | 100 | 410 | 574 | 235 | 154 | M8 | Ø9 | 171 | 15 | 235 | C |

ELECTRO MAGNETIC FEEDR CONTROLLERS (Leaflet L0103)



CCO3 (CV6) CONTROLLER



CR03 (R3FSC) CONTROLLER



MVSI

The most extensive range of industrial electric vibrators on the market. Approved for potentially explosive dust atmospheres (ATEX, IECEx, GOST). Range from 0 to 67200 lbs.



MVSI-TS

MVSI industrial electric vibrators with split covers.



MVSI-ACC

MVSI industrial electric vibrators for axial coupling.



MVSI-E

"Ex e" increased safety electric vibrators for potentially explosive atmosphere (ATEX, IECEx, GOST). Range up to 24550 lbs.



MVLS

Low Speed electric industrial vibrators. Range up to 18000 lbs centrifugal force. RPM from 1200 to 500.



CDX

"Ex d" explosion-proof industrial electric vibrators for operation in potentially explosive atmospheres (UL, CSA, ATEX, IECEx, GOST). Range up to 49250 lbs.



MVTX

"Ex d" explosion-proof screen vibrators for operation in potentially explosive atmospheres. Bear UL, cUL, ATEX and IECEx marking. Range up to 17450 lbs.



MVCC

Direct current vibrators (12 or 24 V) designed for continuous duty on mobile machines. Range from 0 to 3350 lbs.



MVSS

Electric industrial vibrators in stainless steel AISI 316L for the chemical, petroleum chemistry, food, pharmaceutical processing sectors. Range from 0 to 9520 lbs.



MICRO

Electric vibrators designed for continuous service in processes where a lower centrifugal force is required. Range from 0 to 143 lbs.



M3

Electric industrial vibrators with multi-holes mounting feet and minimum dimensions. Range up to 684 lbs.



ITV-VR

Variable high frequency electric vibrators with fixed or cradle connection for industrial building sector. Range from 0 to 19800 lbs.



ITVAF

High frequency electric vibrators with fixed or cradle connection for industrial building sector. Range from 0 to 19800 lbs.



VU

Unidirectional linear motion exciters designed for medium and large size vibrating machines. Range up to 6400 in-lbs (102000 lbs).



MTF

Vertical electric vibrators with side flange. Range from 0 to 5750 lbs.



MTF-E

"Ex e" increased safety vertical electric vibrators with side flange for potentially explosive atmosphere (ATEX, IECEx, GOST).



VB

Vertical electric vibrators with double tapered flange. Range from 0 to 11000 lbs.



VB-E

Vertical electric vibrators with side flange. Range from 0 to 5750 lbs.



MVB

Vertical electric vibrators with side flange and shaft projecting on both sides. Range from 0 to 15400 lbs.



MVB-FLC

Vertical electric vibrators with central flange and shaft projecting on both sides. Range from 0 to 15400 lbs.



MVB-E

"Ex e" increased safety vertical electric vibrators with side flange and shaft projecting on both sides, for potentially explosive atmosphere (ATEX, IECEx, GOST).



MVB-E-FLC

"Ex e" increased safety vertical electric vibrators with central flange and shaft projecting on both sides, for potentially explosive atmosphere (ATEX, IECEx, GOST).

VIBTEC
VIBRATECHNIQUES LTD
Vibration Solutions