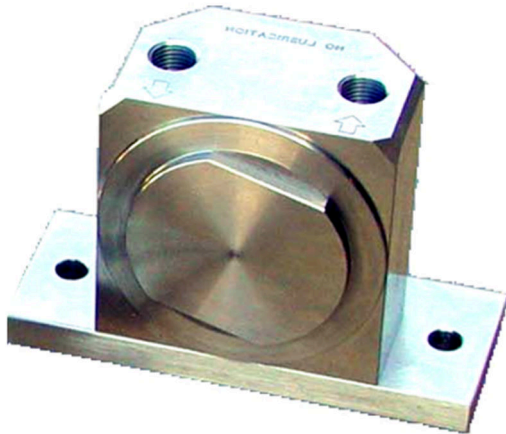


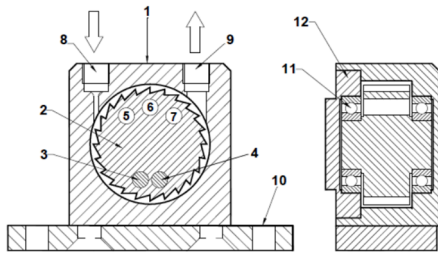
GT SS STAINLESS STEEL PNEUMATIC TURBINE VIBRATORS (UK/US Specification*)



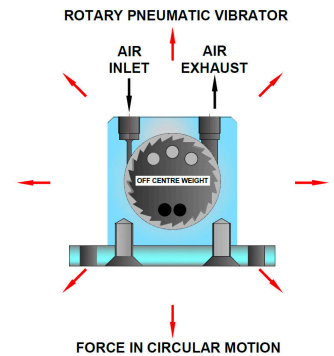
Stainless Steel
Rotary Vibrator
No Lubrication required
Force 583 N to 4900 N
Suitable for temperature up to -40°C to 120°C
Noise level 60-70 dB(a) with silencer fitted

On request can be supplied with ATEX certification to ATEX 95 94/9/EC  II 2 G & D Zone 1, 2 & 21, 22

CONSTRUCTION



1. Stainless Steel Body
2. Stainless Steel Turbine Wheel
- 3/4. High Density Mass Positive Movement
- 5-7. Cavities Giving Negative Moment
8. Air Inlet
9. Air Exhaust
10. Base Mounting Holes
11. Special Pre-Lubricated Matched Sealed Bearings
12. Stainless Steel Endplates with Left Hand Thread



PERFORMANCE DATA

Models		Frequency V.P.M.			Centrifugal Force					Air Consumption / Minute						
Standard	ATEX	2 Bar	4 Bar	6 Bar	2 Bar	29 PSI	4 Bar	58 PSI	6 Bar	87 PSI	2 Bar	29 PSI	4 Bar	58 PSI	6 Bar	87 PSI
		29 PSI	58 PSI	87 PSI	N	lbs	N	lbs	N	lbs	Litr	CF	Litr	CF	Litr	CF
GTSS Standard Model supplied with Mounting Plate																
GT10SS	GT10SS EX	27000	32000	37000	750	168	1350	302	2100	472	46	1.6	80	2.8	112	3.9
GT16SS	GT16SS EX	20000	23000	27500	1700	382	2500	562	3700	831	120	4.2	200	7.0	290	10.2
GT25SS	GT25SS EX	14000	17000	19500	2500	562	4150	932	5700	1281	185	6.6	325	11.4	455	16.0
GTS-SS available to special order only, supplied with Mounting Plate, lower frequency than GTSS model																
GT10S-SS	GT10S-SS EX	17000	23000	25000	650	146	1350	303	1950	438	46	1.6	80	2.8	112	3.9
GT16S-SS	GT16S-SS EX	11500	15500	17000	1100	248	1900	427	2700	607	120	4.2	200	7.0	290	10.2
GT25S-SS	GT25S-SS EX	8500	11000	13000	2250	506	3600	809	4900	1102	185	6.5	325	11.4	455	16.1

Data obtained on a heavy laboratory test block. Frequency and force will decrease on a less rigid mounting while the noise level will increase.

* European Specification available to special order without Foot Mounting Plate see Leaflet L1007

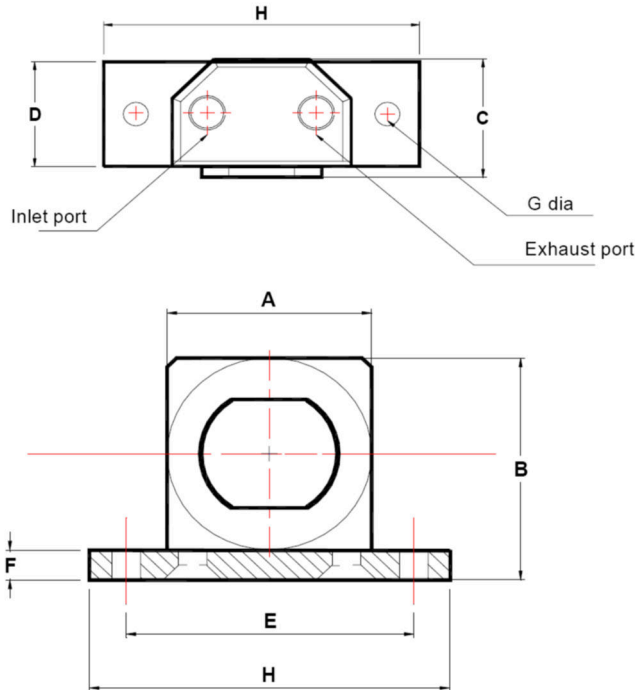
VIBTEC AUSTRALIA

Unit 2, 64 Baile Road, Canning Vale, WA 6155, Perth Australia

Tel: +61 (0)8 6559 7470 Email: info@vibtec.com.au Web: www.vibtec.com.au

GT SS STAINLESS STEEL PNEUMATIC TURBINE VIBRATORS (UK/US Specification*)

DIMENSIONS



Drawing No 076

GTSS (EX) & GTS-SS (EX) Model

Model	Drawing Number	A mm	B mm	C mm	D mm	E mm	F mm	G Dia mm	H mm	Inlet Port	Ex Port	Weight Kgs
GT10SS & GT10S-SS	076005	49	55	38.1	30	68	6	7	86	1/8" BSP	1/8" BSP	0.625
GT16SS & GT16S-SS	076006	64	74	45.5	40	90	10	9	113	1/4" BSP	1/4" BSP	1.307
GT25SS & GT25S-SS	076007	78	88	55.5	50	104	10	11	128	1/4" BSP	1/4" BSP	2.284

* European Specification available to special order without Foot Mounting Plate see Leaflet L1007

<p>Drawing 076011</p>	We can also supply all these items:			
	<p>Filter Regulators and Lubricators Leaflet L1100</p>	<p>Exhausts & Fittings Leaflet L1102</p>	<p>3/2 Pneumatic Valves Leaflet L1103</p>	<p>3/2 Pneumatic Solenoid Valves Leaflet L1104</p>
For Technical Advice on Filters, Hoses and Regulators ask for Technical Manual TM1390.				

VIBTEC AUSTRALIA

Unit 2, 64 Baile Road, Canning Vale, WA 6155, Perth Australia

Tel: +61 (0)8 6559 7470 Email: info@vibtec.com.au Web: www.vibtec.com.au