



Aluminium Body with Painted Finish

Anodised Finish available*

Rotary Vibrator

2 Sets of mounting holes

Frequency / Force adjustable by air pressure

All Models suitable for temperature up to 100°C

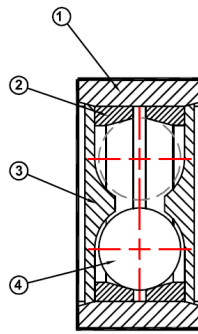
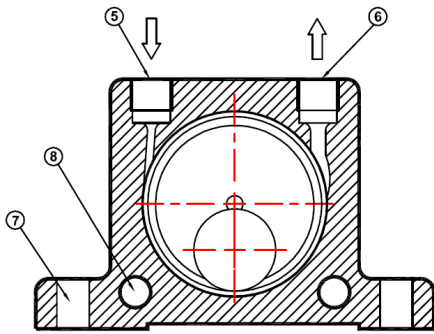
High Temperature Model K20HT to K36HT Max Temperature 150°C*

Noise level 75-95 dB(a) with silencer fitted

Force 130 N to 4050 N

On request can be supplied with ATEX certification to ATEX 95 94/9/EC  II 2 G & D Zone 1, 2 & 21, 22

CONSTRUCTION



Drawing No U/7001

1. Extruded aluminium alloy body
2. Hardened ground steel alloy races
3. Nylon Endplates
4. Hardened lapped ball
5. Air Inlet
6. Air exhaust
7. Base mounting holes
8. Lateral Mounting

PERFORMANCE DATA

Models				Frequency V.P.M.			Centrifugal Force						Air Consumption / Minute					
Standard Painted	Anodise *	High Temp *	ATEX	2 Bar	4 Bar	6 Bar	2 Bar	29 PSI	4 Bar	58 PSI	6 Bar	87 PSI	2 Bar	29 PSI	4 Bar	58 PSI	6 Bar	87 PSI
				29 PSI	58 PSI	87 PSI	N	lbs	N	lbs	N	lbs	litr	CF	litr	CF	litr	CF
K08	K08A	-	K08EX	25500	31000	35000	130	29	260	58	360	81	83	2.9	145	5.1	195	6.9
K10	K10A	-	K10EX	22500	28000	34000	250	56	470	106	710	160	92	3.2	150	5.3	200	7.1
K13	-	-	K13EX	15000	18000	22500	320	72	550	124	870	196	94	3.3	158	5.6	225	7.9
K16	-	-	K16EX	13000	17000	19500	450	101	800	180	1100	248	122	4.3	200	7.1	280	9.9
K20	-	K20HT	K20EX	10500	14500	16500	720	162	1220	275	1720	387	130	4.6	230	8.1	340	12.0
K25	-	K25HT	K25EX	9200	12200	14000	930	209	1570	353	2050	461	160	5.6	290	10.2	425	15.0
K30	-	K30HT	K30EX	7800	9700	12500	1510	340	2470	556	3210	722	215	7.6	375	13.2	570	20.0
K36	-	K36HT	K36EX	7300	9000	10000	2060	464	3150	709	4050	911	260	9.2	475	16.8	675	24.0

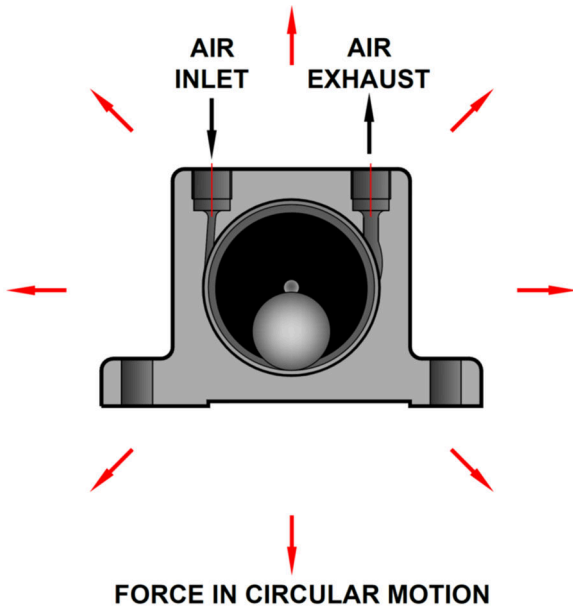
* Anodised and High Temperature Models special Build

VIBTEC AUSTRALIA

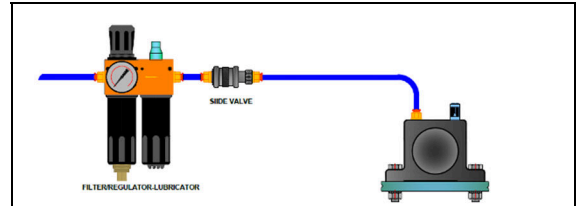
Unit 2, 64 Baile Road, Canning Vale, WA 6155, Perth Australia

Tel: +61 (0)8 6559 7470 Email: info@vibtec.com.au Web: www.vibtec.com.au

ROTARY PNEUMATIC VIBRATOR

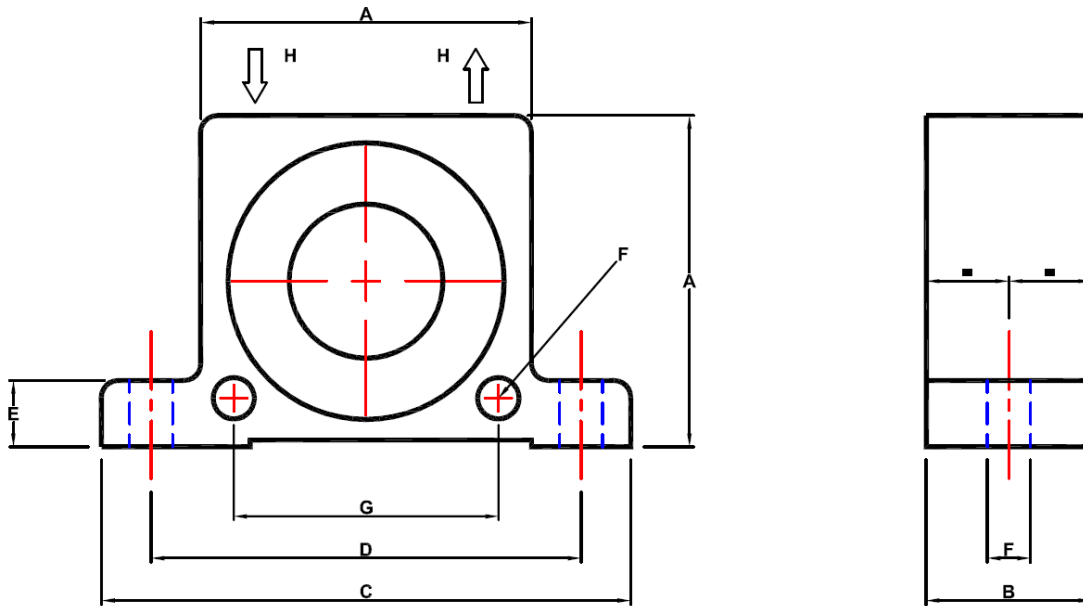


Standard Units K8 to K36 with nylon endplates
Standard Units Max Temperature 100 °C
High Temperature Units K20HT to K36HT 150 °C



For Technical Advice on Filters, Hoses and Regulators ask for Technical Manual TM1390

DIMENSIONS



Models				A		B		C		D		E		F		G		H		Weight	
Standard Painted	Anodised *	High Temp *	ATEX	mm	inch	mm	inch	mm	inch	mm	inch	mm	inch	mm	inch	mm	inch	BSP	kg	lbs	
K08	K08A	-	K08EX	50	1.97	20	0.79	86	3.38	68	2.68	12	0.47	7	0.27	40	1.57	1/4"	.130	.29	
K10	K10A	-	K10EX	50	1.97	20	0.79	86	3.38	68	2.68	12	0.47	7	0.27	40	1.57	1/4"	.130	.29	
K13	-	-	K13EX	65	2.56	24	0.94	113	4.45	90	3.54	16	0.63	9	0.35	50	1.97	1/4"	.260	.57	
K16	-	-	K16EX	65	2.56	27	1.06	113	4.45	90	3.54	16	0.63	9	0.35	50	1.97	1/4"	.300	.66	
K20	-	K20HT	K20EX	80	3.15	33	1.30	128	5.04	104	4.09	16	0.63	9	0.35	60	2.36	1/4"	.530	1.17	
K25	-	K25HT	K25EX	80	3.15	38	1.50	128	5.04	104	4.09	16	0.63	9	0.35	60	2.36	1/4"	.630	1.39	
K30	-	K30HT	K30EX	100	3.94	44	1.73	160	6.30	130	5.12	20	0.79	11	0.43	80	3.15	3/8"	1.130	2.49	
K36	-	K36HT	K36EX	100	3.94	50	1.97	160	6.30	130	5.12	20	0.79	11	0.43	80	3.15	3/8"	1.340	2.95	

Data obtained on a heavy laboratory test block. Frequency and force will decrease on a less rigid mounting while the noise level will increase.