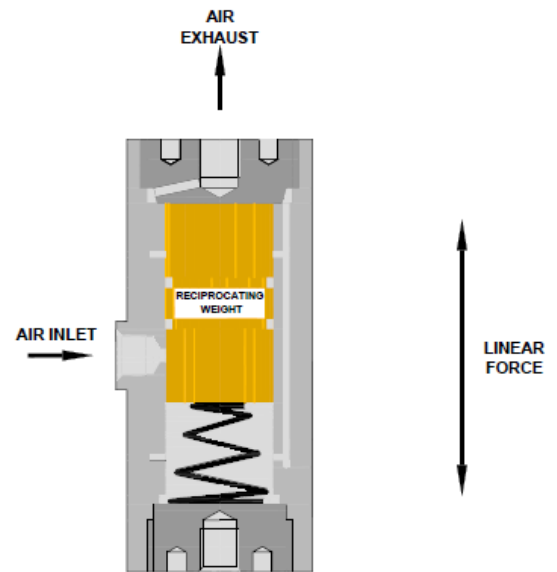




LINEAR PNEUMATIC VIBRATOR



## Linear Vibration

Ideal for arduous conditions

Force 32 N to 6150 N

Frequency and amplitude adjustable independently

FP12-FP35 Suitable for temperature from 10°C up to 150°C

FP50-FP95 Suitable for temperature from 10°C up to 120°C

FP12-FP95 LT low temperature and FP50-FP95 HT high temperature models also available

On request can be supplied with ATEX certification to ATEX 95 94/9/EC  II 2 G & D Zone 1, 2 & 21, 22

## PERFORMANCE DATA

Models		Frequency V.P.M.			Linear Force Measured						Air Consumption / Minute						Noise Level	
Standard	ATEX	2 Bar 29PSI	4 Bar 58PSI	6 Bar 87PSI	2 Bar N	29PSI lbs	4Bar N	58PSI lbs	6Bar N	87PSI lbs	2Bar litr	29PSI CFM	4Bar litr	58PSI CFM	6Bar litr	87PSI CFM	A** dB	A*** dB
FP-12-S	FP-12-SEX	6200	7800	9300	34	7.7	70	16	92	21	0.8	0.03	7.5	0.26	25	0.88	57-61	N/A
FP-12-M	FP-12-MEX	5000	6000	6700	34	7.7	58	13	74	17	0.5	0.02	4	0.14	19	0.67	57-61	N/A
FP-12-L	FP-12-LEX	4000	4800	5400	32	7.2	58	13	81	18	1	0.04	3	0.11	20	0.71	58-60	N/A
FP-18-S	FP-18-SEX	5000	6400	7700	66	15.0	134	30	187	42	5	0.18	33	1.16	57	2.00	62-71	N/A
FP-18-M	FP-18-MEX	4000	5000	5900	68	15.0	134	30	188	42	4	0.14	28	1.00	52	1.84	61-67	N/A
FP-18-L	FP-18-LEX	3100	4000	4600	64	14.0	150	34	206	46	5	0.18	23	0.81	46	1.62	61-68	N/A
FP-25-S	FP-25-SEX	3600	4300	5500	126	28	270	61	416	94	13	0.46	54	1.91	93	3.28	70-75	61-67
FP-25-M	FP-25-MEX	3000	3800	4200	142	32	364	82	504	113	23	0.81	50	1.76	87	3.07	73-75	62-66
FP-25-L	FP-25-LEX	2400	3100	3700	186	42	392	88	594	134	18	0.64	62	2.19	93	3.28	72-75	60-65
FP-35-S	FP-35-SEX	2800	4700	5800	294	66	668	150	1038	234	23	0.81	101	3.56	162	5.72	72-77	71-73
FP-35-M	FP-35-MEX	3000	4000	4600	248	56	778	175	1080	243	24	0.84	83	2.93	141	4.98	74-78	70-73
FP-35-L	FP-35-LEX	2400	3100	3600	282	63	680	153	1066	240	38	1.34	89	3.14	135	4.77	74-78	68-74
FP-50-M*	FP-50-MEX*	1850	2300	2800	490	110	970	218	1660	360	48	1.67	100	3.48	192	6.61	70-77	N/A
FP-60-M*	FP-60-MEX*	1950	2400	2700	610	137	1400	315	2170	489	90	3.13	160	5.57	275	9.39	73-79	N/A
FP-95-M*	FP-95-MEX*	1800	2400	2800	1620	364	4100	921	6150	1282	170	5.91	320	11.13	490	15.65	85-92	N/A

**NOISE LEVEL :NOTE** \*\* With customary silencer \*\*\* With 1/4" Free Flow Silencer

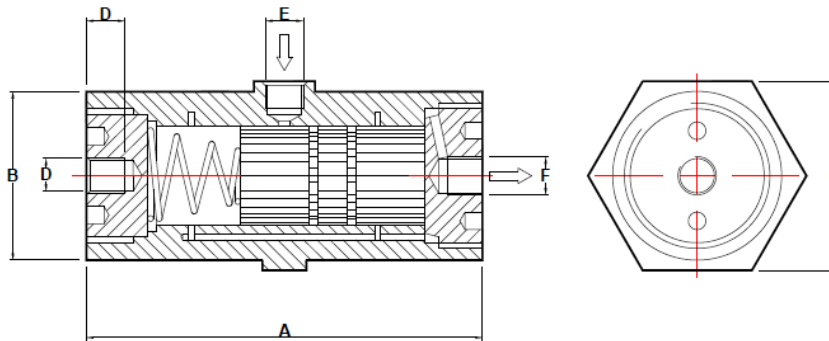
**FREQUENCY AND AMPLITUDE:** By using a flow restricting silencer on the FP, FPLF, FAL, and VTL vibrators the amplitude can be reduced whilst the frequency remains almost constant.

# VIBTEC AUSTRALIA

**Unit 2, 64 Baile Road, Canning Vale, WA 6155, Perth Australia**

Tel: +61 (0)8 6559 7470 Email: info@vibtec.com.au Web: www.vibtec.com.au

## DIMENSIONS



Drawing No 081001

### IMPORTANT

It is recommended that a 3/2 Pneumatic Valve is used in installation.

Leaflet L1 103 Available on request



Models		A		B		C		D Metric Thread	D Depth Of Thread	BSP Thread			Weight of Body		Weight of Piston		Total Weight	
Standard	ATEX	mm	inch	mm	inch	mm	inch			E	E1	F	kg	lbs	kg	lbs	kg	lbs
FP-12-S	FP-12-S EX	71	2.80	31	1.22	34	1.34	M8	11mm	1/8"	N/A	1/8"	0.125	0.275	0.020	0.045	0.153	0.320
FP-12-M	FP-12-M EX	81	3.19	31	1.22	34	1.34	M8	11mm	1/8"	N/A	1/8"	0.140	0.309	0.030	0.066	0.178	0.375
FP-12-L	FP-12-L EX	94	3.70	31	1.22	34	1.34	M8	11mm	1/8"	N/A	1/8"	0.165	0.360	0.040	0.090	0.212	0.450
FP-18-S	FP-18-S EX	81	3.19	40	1.57	42	1.65	M10	12mm	1/8"	N/A	1/8"	0.220	0.485	0.060	0.135	0.300	0.620
FP-18-M	FP-18-M EX	94	3.70	40	1.57	42	1.65	M10	12mm	1/8"	N/A	1/8"	0.260	0.575	0.080	0.175	0.352	0.750
FP-18-L	FP-18-L EX	109	4.29	40	1.57	42	1.65	M10	12mm	1/8"	N/A	1/8"	0.300	0.660	0.110	0.240	0.423	0.900
FP-25-S	FP-25-S EX	98	3.86	48	1.89	50	1.97	M12	15mm	1/8"	N/A	1/4"	0.375	0.825	0.155	0.345	0.553	1.170
FP-25-M	FP-25-M EX	116	4.57	48	1.89	50	1.97	M12	15mm	1/8"	N/A	1/4"	0.435	0.955	0.215	0.475	0.672	1.430
FP-25-L	FP-25-L EX	136	5.35	48	1.89	50	1.97	M12	15mm	1/8"	N/A	1/4"	0.500	1.100	0.290	0.640	0.820	1.740
FP-35-S	FP-35-S EX	98	3.86	58	2.28	65	2.55	M12	15mm	1/4"	N/A	1/4"	0.530	1.168	0.315	0.694	0.926	1.862
FP-35-M	FP-35-M EX	116	4.57	58	2.28	65	2.55	M12	15mm	1/4"	N/A	1/4"	0.610	1.344	0.430	0.947	1.135	2.292
FP-35-L	FP-35-L EX	136	5.35	58	2.28	65	2.55	M12	15mm	1/4"	N/A	1/4"	0.700	1.543	0.530	1.278	1.382	2.281
FP-50-M*	FP-50-M EX*	154	6.07	84	3.31	N/A	N/A	N/A	N/A	1/4"	1/4"	1/4"	1.750	3.858	1.500	3.307	3.300	7.165
FP-60-M*	FP-60-M EX*	154	6.07	94	3.70	N/A	N/A	N/A	N/A	1/4"	3/8"	1/4"	2.100	4.629	2.150	4.740	4.250	9.369
FP-95-M*	FP-95-M EX*	156	6.15	140	5.52	N/A	N/A	N/A	N/A	3/8"	3/8"	N/A	4.500	9.921	4.900	10.802	9.460	20.723

**NOTE** The FP-50-M, FP-60-M and FP-90-M are supplied with square base plates (G) attached for alternative fixing using 4 off bolts instead of the M16 x 15 single stud.

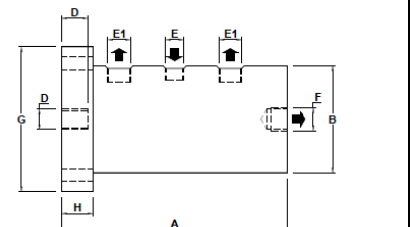
This increases the overall length by 19-20mm (H).

### Plate Dimensions are

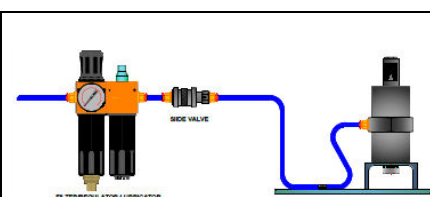
FP-50-M 90 mm x 90 mm x 20 mm thick, 4 Holes 8.8 mm dia. 72 mm x 72 mm pitch

FP-60-M 110 mm x 110 mm x 20 mm thick, 4 Holes 8.8 mm dia. 90 mm x 90 mm pitch

FP-95-M 150 mm x 150 mm x 19 mm thick, Holes 13.0 mm dia. 124 mm x 124 mm pitch



Drawing No 081001



For Technical Advice on Filters, Hoses and Regulators ask for Technical Manual TM1390.

We can also supply all these items:



Filter Regulators and Lubricators  
Leaflet L1100

Exhausts & Fittings  
Leaflet L1102

3/2 Pneumatic Valves  
Leaflet L1103

3/2 Pneumatic Solenoid Valves  
Leaflet L1104