

Linear Vibrator

Available in Impacting or Air Cushioned

Heavy Ductile Iron Body

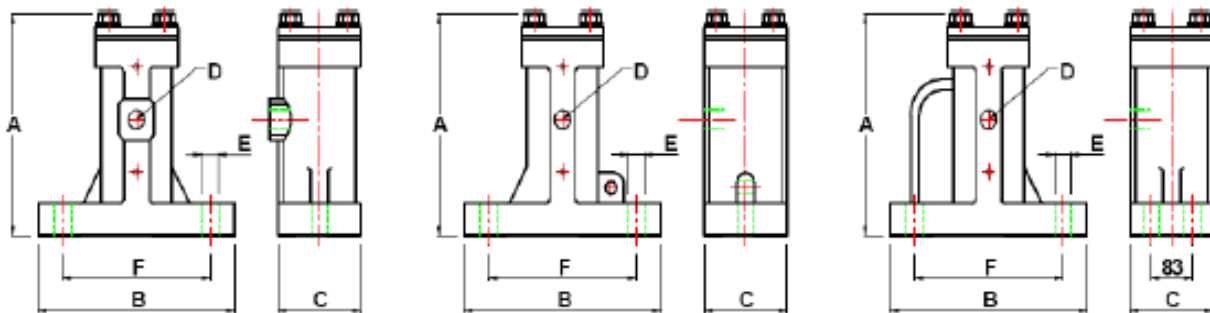
Frequency and force adjustable by air pressure

Continuous running or single impact

PERFORMANCE

MODEL	20 PSI (1.4 Bar)			40 PSI (2.8 Bar)			60 PSI (4.1 Bar)		
	Speed VPM	Flow L/min	Force kgs	Speed VPM	Flow L/min	Force kgs	Speed VPM	Flow L/min	Force kgs
P1 IM	4000	42	112	6100	56	407	8100	84	560
P1- 1/4 IM	3400	56	173	4600	98	652	5750	154	1018
P1 - 5/8 IM	3520	62	652	4500	140	804	5600	224	1028
P2 IM	2750	62	855	4000	154	1069	5350	252	1303
P3 IM	2250	210	1812	3000	462	2087	3750	714	2535
P1 AC	2600	42	7	3250	56	14	3950	62	22
P1 - 1/4 AC	2350	56	11	2900	98	22	3400	168	33
P1 - 5/8 AC	1650	56	18	2000	140	37	2400	210	56
P2 AC	1600	62	29	1950	140	57	2250	238	86
P3 AC	1400	182	64	1700	378	128	1950	574	192

DIMENSIONS



MODEL	Weight kgs	A	B	C	D	E	F
		Height mm	Length mm	Width mm	Inlet BSP	Bolt Hole mm	Bolt Centres mm
P1 AC/IM	1.81	99	114	51	1/4	13	89
P1- 1/4 AC/IM	4.08	143	152	64	1/4	13	114
P1 - 5/8 AC/IM	8.62	191	241	83	1/4	16	191
P2 AC/IM	8.62	191	241	83	1/4	16	191
P3 AC/IM	22.68	244	267	127	3/8	22	197 x 83

VIBTEC AUSTRALIA

Unit 2, 64 Baile Road, Canning Vale, WA 6155, Perth Australia

Tel: +61 (0)8 6559 7470 Email: info@vibtec.com.au Web: www.vibtec.com.au